



CYMBER



Built on metal, shaping the future of industry.





Table of Content

01/	Company Profile	01
02/	Core Business and Services	03
03/	Strengths and Features	05
04/	Application fields	07
05/	Product Introduction Aluminum alloy	09
06/	Mechanical properties	21
06/	Development Vision	25



Company Profile



Cyber is a modern enterprise based in Jiangyin City, Jiangsu Province—the core area of China's Yangtze River economic circle—specializing in the trade, processing, and supply chain services of metal materials, copper and aluminum. The company integrates R&D, production, warehousing, and sales. With strong technical capabilities, a large precision processing team, and extensive spot warehousing capacity, it is committed to providing global customers with one-stop solutions from raw materials to precision components. It has now developed into one of the most influential metal material service providers in East China.

Our Core Strengths:

Double assurance of processing capability and spot stock strength.

On one hand, the company has built a large-scale precision machining team in the industry, gathering dozens of senior technical craftsmen and precision equipment operators, equipped with multiple imported CNC machin-

ing equipment. It can undertake customized precision machining services for copper bars, copper plates, copper tubes, and special-shaped copper parts, with tolerance accuracy controlled at the 0.01mm level, meeting the stringent requirements of high-end manufacturing fields.

On the other hand, the company has independently constructed a 3,200-ton professional copper material spot warehouse, maintaining a complete range of copper materials including red copper, brass, and bronze. With comprehensive varieties and sufficient quantities in spot inventory, it completely resolves customers' pain points of "urgent orders being difficult to place and waiting due to out-of-stock situations."

Our Commitment:

Cyber has always adhered to the business philosophy of "professional processing, spot delivery, quality first." We deeply understand that in the fierce market competition, speed and quality are equally important. We not only promise to provide high-quality copper materials and precision-processed products, but also commit to delivering efficient and flexible supply chain services.

Core Business and Services »



Trade in Metal Materials

The company primarily deals in various non-ferrous metals (such as copper and aluminum), with a complete range of products and diverse specifications. It has established long-term and stable strategic cooperative relationships with multiple large domestic enterprise groups, ensuring stable supply sources and reliable quality.

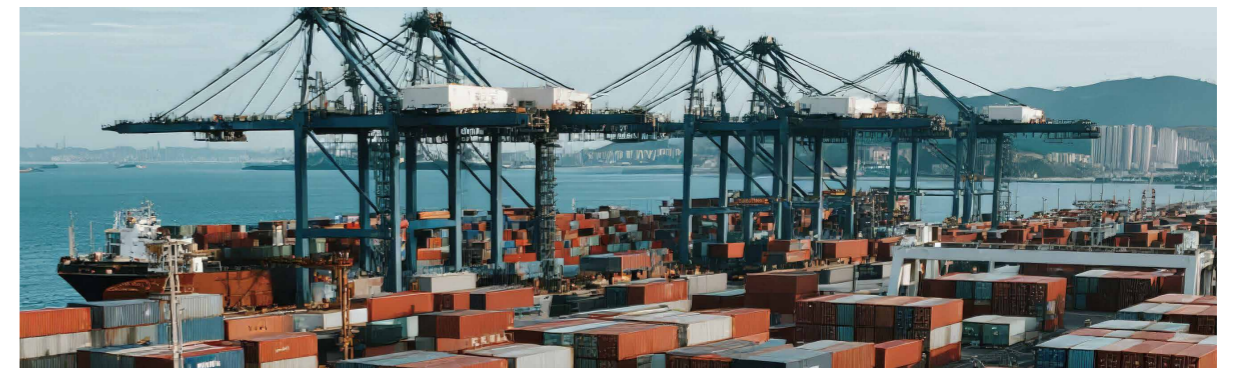
Material Processing Service

To meet customers' personalized needs, the company is equipped with advanced leveling, slitting, cutting, laser processing and other equipment, capable of providing precise leveling, slitting, cutting, laser blanking and other processing services, effectively helping customers reduce inventory, lower costs, and improve production efficiency.



Supply Chain Integration Services

The company integrates upstream and downstream resources, providing a full-process supply chain service that covers raw material procurement, inventory management, precision machining, logistics distribution, and technical support. It builds an efficient and agile supply system to create maximum value for customers.



Advantages and Features »



Advantageous geographical location

The company is located in Jiangyin, known as "China's No.1 County in Manufacturing," adjacent to the golden waterway of the Yangtze River. It is surrounded by a dense highway network, offering extremely convenient logistics and transportation. This enables rapid response to the needs of customers in the Yangtze River and across the country.



Resource channels are stable

Leveraging deep industry accumulation and close relationships with upstream copper mills, we possess advantageous procurement channels and price competitiveness, ensuring stable supply of bulk materials.



Quality Assurance System

We have established a strict quality control system. All products are provided with material certificates to ensure that every link from the source to shipment meets the standards, satisfying customers' pursuit of high-quality materials.



Technical team is professional

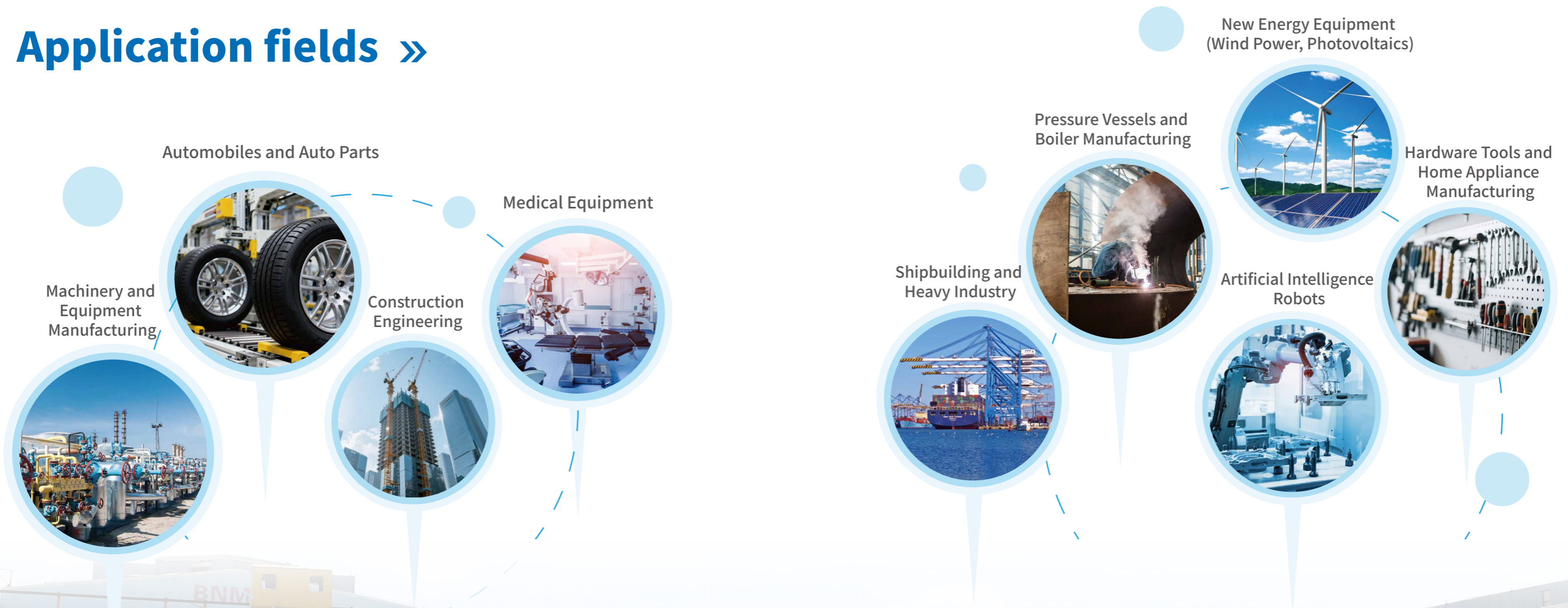
We have an experienced and highly skilled service team that can provide customers with material selection consultation, technical Q&A, and after-sales support, resolving various issues encountered in practical applications.

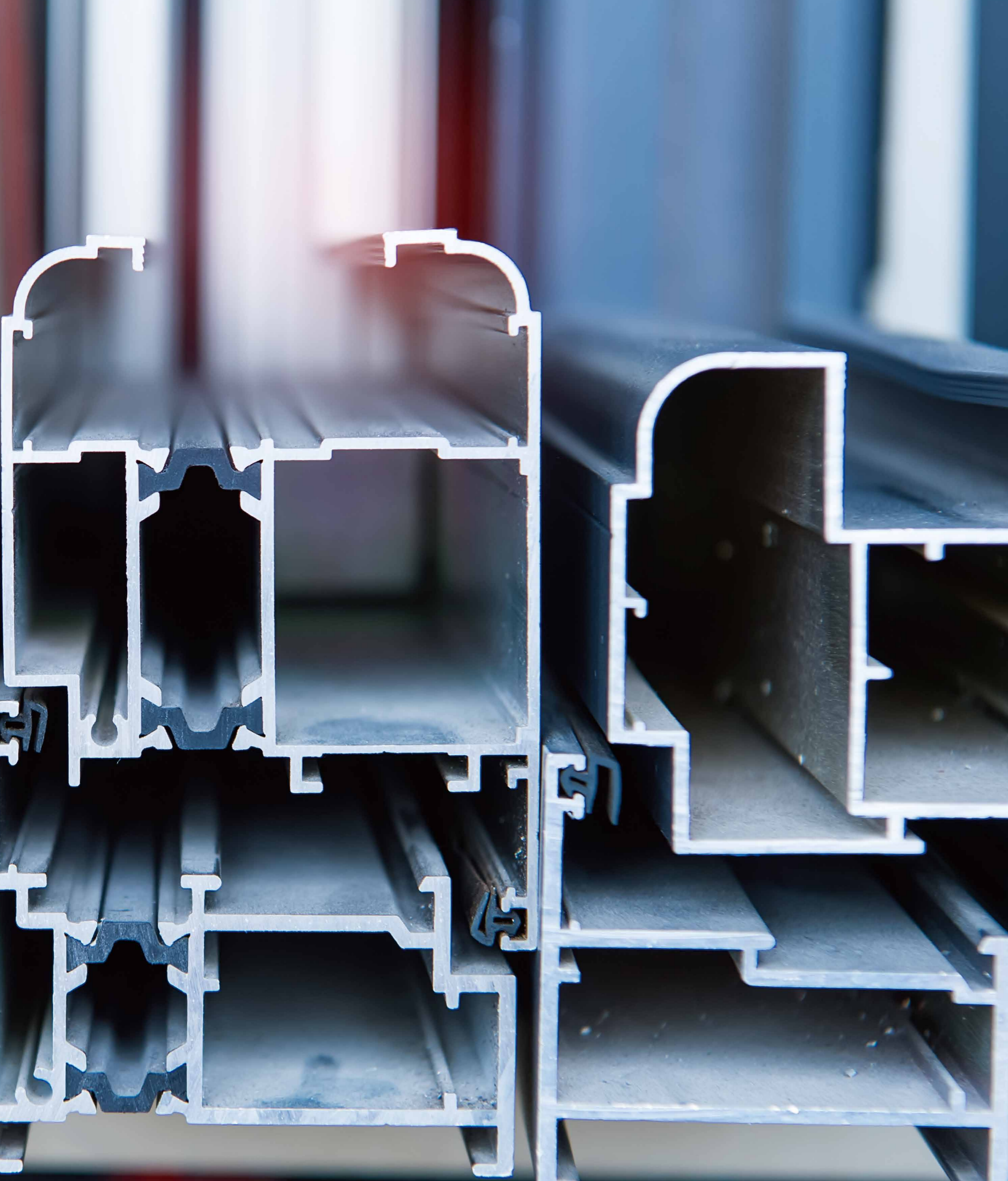


Customer-first philosophy

Always customer demand-centered, we provide flexible and diverse cooperation models. Whether it is large-scale engineering projects or scattered orders from small and medium-sized manufacturing enterprises, they can all receive equally efficient and professional services.

Application fields »





Aluminum alloy »

Aluminum alloy is the most widely used type of non-ferrous metal structural material in industry, and has been extensively applied in aviation, aerospace, automotive, machinery manufacturing, shipbuilding, and the chemical industry. The rapid development of the industrial economy has led to an increasing demand for aluminum alloy welded structural components, which in turn has deepened the research on the weldability of aluminum alloys.

Aluminum rod »



Product Specifications

Name:	Aluminum rod
Standard:	GB/T 3190, JIS H 4040, AMS 4117 , EN 573 /EN 755, ANSI H35.1 / H35.2 ,ASTM B211 / B211M
Material	1060、1050、ENAW-1060 、A1060、 2A12、 5052 、6061 、6063、 6082、 7075、 5083、 3003、 6082、 2017 、5083、 5056 、3003
Surface:	Glossy surface
Diameter:	10-410mm
Length:	600-6000mm

Product Features

- Excellent electrical conductivity
- Excellent thermal conductivity
- High strength
- Corrosion resistance
- Good ductility

Application Field

Aerospace, Transportation, Construction Engineering, Mechanical Manufacturing, Industrial Equipment, Electronic Appliances, Military Industry, Sports, New Energy

Aluminum tube »



Product Specifications

Name:	Aluminum tube
Standard:	GB/T 4436-2012, GB/T 4437.1 ~ 4437.3, ISO 6362, AMS-QQ-A-200/AMS 4080, JIS H4100 ,ASTM B210/B210M , EN 755-1 ~ EN 755-10
Material	1060 、1050、ENAW-1060、 A1060、 2A12、 5052、 6061、 6063、 6082 、7075、 5083 、 3003 、6082、 2017、 5083 、5056、 3003
Surface:	Glossy surface
Diameter:	Outer diameter:D8-400mm;inside diameter:D6-320mm
Length:	600-6000mm

Product Features

- Excellent electrical conductivity
- Excellent thermal conductivity
- High strength
- Corrosion resistance
- Good ductility

Application Field

Aerospace,Construction Engineering,Industrial Equipment,Electronics and Electrical Appliances

Aluminum sheet »



Product Specifications

Name:	Aluminum sheet
Standard:	GB/T 3880.1-2023, ISO 209-1:2018, ASTM B209/B209M-21, ASTM B557-15, EN 573-1:2004, EN 573-3:2013 , EN 485-1:2016, EN 485-2:2016
Material	5052h32/0 、 5052h112、 6061-T6、6061T651、 、6063-T6、 6082-T6、 7075-T651、 2A12-T4、 5083/0 、5083-H112、3003H24 、3003-H112、 6061T6 、6061T651 、 6063T651 、6082T651 、7075T651
Surface:	Glossy surface
Diameter:	4-50mm
Length:	As required

Product Features

- Good electrical conductivity
- Good thermal conductivity
- High strength
- Corrosion resistance
- Easy to process

Application Field

Aerospace, Transportation, Architectural Decoration, Electronic Appliances, Food Packaging

Aluminum bar »



Product Specifications

Name:	Aluminum bar
Standard:	GB/T 6892-2015, EN 755-1 ~ EN 755-9 , EN 12020-2, ASTM B221 / ANSI H35.2, ASTM B308, ISO 6362-1:2022, ISO 209, ISO 2107
Material	1060、 1100、 1050、EN AW-1050A、EN AW-1060、A1050、A1060、2011、2017、2024、2A12、 2011、2017、EN AW-2011、EN AW-2017、EN AW-2024、 3003、3004 、EN、AW-3003、 4032、 4A01、4032 、5052、5056、 5083、5754、 EN AW-4032 、EN AW-5052、ENAW-5083、 A2011、 A2017、A2024、A3003、 A4032 、A5052 、A5083 、6061、6063、 EN AW-6060、EN AW6063 、 EN AW-6082、 A6063、 6082、6101 、6061、7075、7050、EN AW-7075、 A7075、 7A04
Surface:	Glossy surface
Diameter:	As required
Length:	As required

Product Features

- Good electrical conductivity
- Good thermal conductivity
- High strength
- Corrosion resistance
- Easy to process

Application Field

Aerospace, Transportation, Architectural Decoration, Electronic Appliances



Aluminum square bar »



Product Specifications

Name:	Aluminum square bar
Standard:	GB/T 3190, JIS H 4040, AMS 4117, EN 573 /EN 755, ANSI H35.1 / H35.2,ASTM B211 / B211M, ASTM B221 / B221M
Material	1060、1100、1050、EN AW-1050A、EN AW-1060、A1050、A1060、2011、2017、2024、2A12、2011、2017、EN AW-2011、EN AW-2017、EN AW-2024、3003、3004 、EN、AW-3003、4032、4A01、4032 、5052、5056、5083、5754、EN AW-4032 、EN AW-5052、ENAW-5083、A2011、A2017、A2024、A3003、A4032 、A5052 、A5083 、6061、6063、EN AW-6060、EN AW6063 、EN AW-6082、A6063、6082、6101 、6061、7075、7050、EN AW-7075、A7075 、7A04
Surface:	Glossy surface
Diameter:	20-200mm
Length:	As required

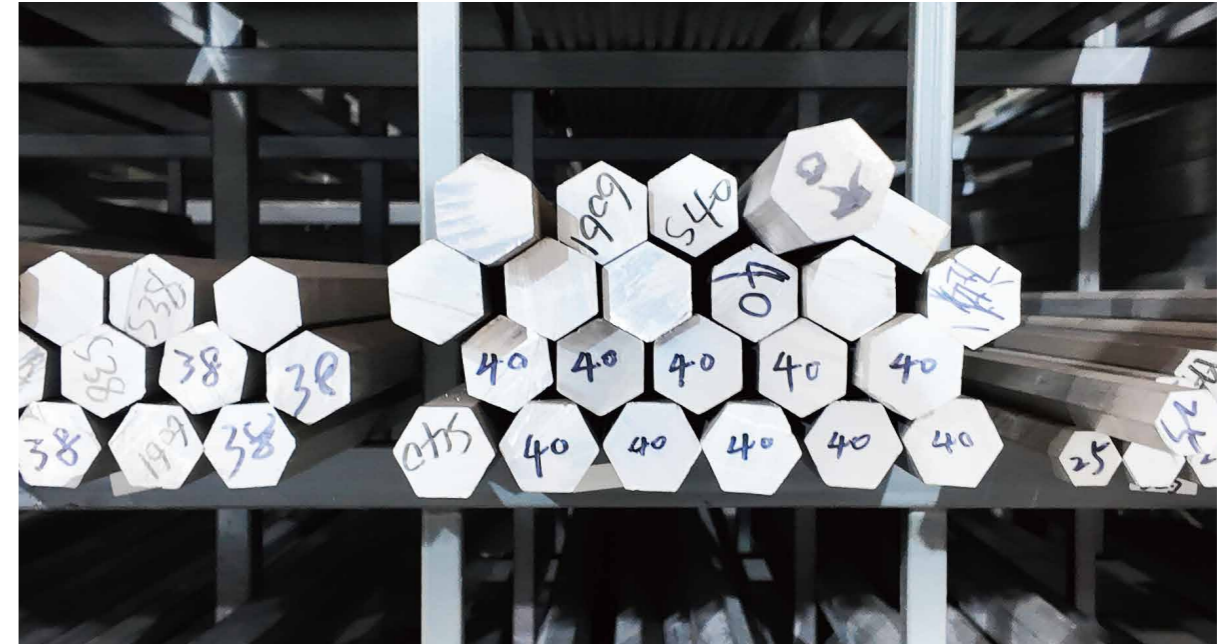
Product Features

- Excellent electrical conductivity
- Excellent thermal conductivity
- High strength
- Corrosion resistance
- Good ductility

Application Field

Aerospace, Transportation, Construction Engineering, Mechanical Manufacturing, Industrial Equipment, Electronic Appliances, Military Industry, Sports, New Energy

Aluminum hexagonal bar »



Product Specifications

Name:	Aluminum hexagonal bar
Standard:	GB/T 3190, JIS H 4040 , AMS 4117 , EN 573 /EN 755 , ANSI H35.1 / H35.2, ASTM B211 / B211M, ASTM B221 / B221M
Material	1060、1050、ENAW-1060、A1060、2A12、5052 、6061、6063、6082、7075、5083、3003、6082 、2017 、5083、5056 、3003
Surface:	Glossy surface
Diameter:	S5-200mm
Length:	As required

Product Features

- Excellent electrical conductivity
- Excellent thermal conductivity
- High strength
- Corrosion resistance
- Good ductility

Application Field

Aerospace, Transportation, Construction Engineering, Mechanical Manufacturing, Industrial Equipment, Electronic Appliances, Military Industry, Sports, New Energy

Large aluminum rod »



Product Specifications

Name:	Large aluminum rod
Standard:	GB/T 3190 , JIS H 4040, AMS 4117, EN 573 /EN 755,ANSI H35.1 / H35.2 , ASTM B211 / B211M , ASTM B221 / B221M
Material	1060、1050 、ENAW-1060、 A1060、 2A12、 5052、 6061、 6063、 6082、 7075 、5083、 3003、 6082、 2017、 5083、 5056 、3003
Surface:	Glossy surface
Diameter:	10-410mm
Length:	600-6000mm

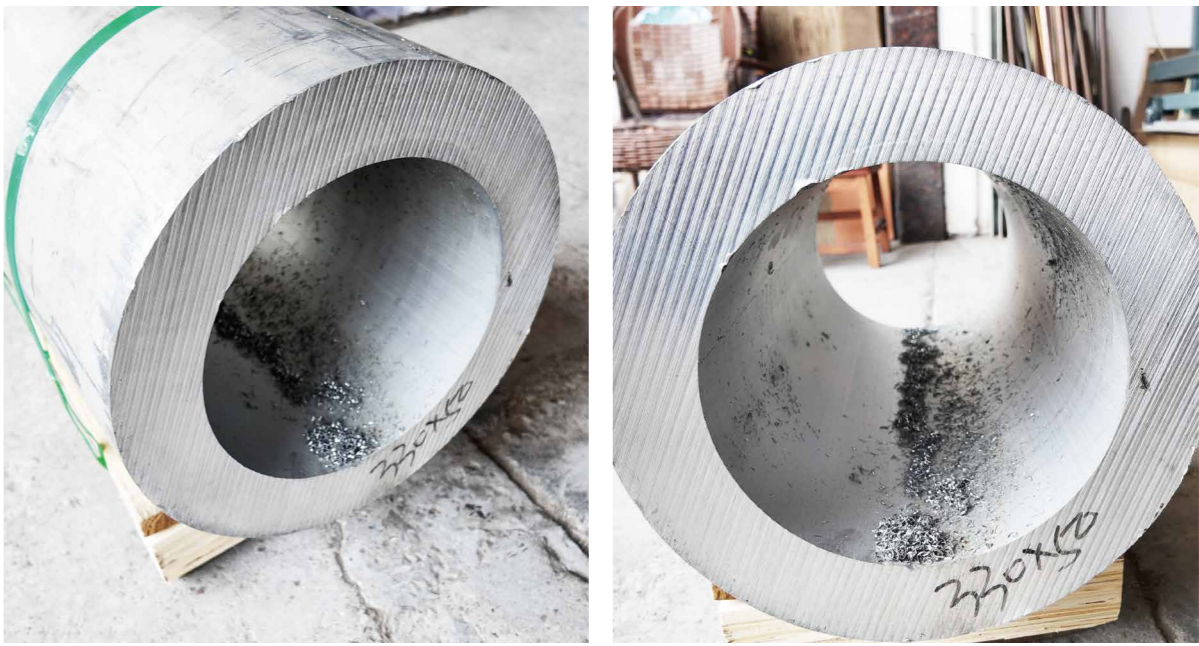
Product Features

- Excellent electrical conductivity
- Excellent thermal conductivity
- High strength
- Corrosion resistance
- Good ductility

Application Field

Aerospace, Transportation, Construction Engineering, Mechanical Manufacturing, Industrial Equipment, Electronic Appliances, Military Industry, Sports, New Energy

Large aluminum tube »



Product Specifications

Name:	Large aluminum tube
Standard:	GB/T 4436-2012, GB/T 4437.1 ~ 4437.3, ISO 6362, AMS-QQ-A-200/AMS 4080, JIS H4100, ASTM B210/B210M, EN 755-1 ~ EN 755-10
Material	1060、1050 、ENAW-1060、 A1060、 2A12、 5052、 6061、 6063、 6082、 7075 、5083 、 3003、 6082 、2017、 5083、 5056、 3003
Surface:	Glossy surface
Diameter:	Outer diameter:D8-400mm; inside diameter:D6-320mm
Length:	600-6000mm

Product Features

- Excellent electrical conductivity
- Excellent thermal conductivity
- High strength
- Corrosion resistance
- Good ductility

Application Field

Aerospace, Transportation, Construction Engineering, Mechanical Manufacturing, Industrial Equipment

Aluminum alloy finished parts >>



Product Specifications

Name:	Aluminum alloy finished parts
Standard:	GB/T 3190, JIS H 4040, AMS 4117 , EN 573 /EN 755, ANSI H35.1 / H35.2 ,ASTM B211 / B211M
Material	1060、1050、ENAW-1060 、A1060、 2A12、 5052 、6061 、6063、 6082、 7075、 5083、 3003、 6082、 2017 、5083、 5056 、3003
Surface:	Shiny surface
Diameter:	As required
Length:	As required

Product Features

- Good electrical conductivity
- Excellent thermal conductivity
- High strength
- Corrosion resistance
- Good ductility

Application Field

Aerospace, Transportation, Construction Engineering, Machinery Manufacturing, Industrial Equipment

Mechanical properties

Model number	Status	Tensile test			Hardness test		
		Thickness /mm	Tensile strength R. / (N/mm ²)	Elongation after fracture A ₁ 1.3/%	Thickness / mm	Vickers hardness HV	Rockwell hardness HRB
T2、T3 TP1、TP2 TU1、TU2	R	4~14	≥195	≥30	—	—	—
	M	0.3~10	≥205	≥30	≥0.3	≤70	—
	Y ₁		215~275	≥25		60~90	—
	Y ₂		245~345	≥8		80~110	—
	Y		295~380	—		90~120	—
	T		≥350	—		≥110	—
H96	M	0.3~10	≥215	≥30	—	—	—
	Y		≥320	≥3			
H90	M	0.3~10	≥245	≥35	—	—	—
	Y ₂		330~440	≥5			
	Y		≥390	≥3			
H85	M	0.3~10	≥260	≥35	≥0.3	≤85	—
	Y ₂		305~380	≥15		80~115	
	Y		≥350	≥3		≥105	
H80	M	0.3~10	≥265	≥50			
	Y		≥390	≥3			
H70、H68	R	4~14	≥290	≥40	—	—	—
H70 H68 H65	M	0.3~10	≥290	≥40	≥0.3	≤90	—
	Y ₁		325~410	≥35		85~115	—
	Y ₂		355~440	≥25		100~130	—
	Y		410~540	≥10		120~160	—
	T		520~620	≥3		150~190	—
	TY		≥570	—		≥180	—
H63 H62	R	4~14	≥290	≥30	—	—	—
	M	0.3~10	≥290	≥35	≥0.3	≤95	—
	Y ₂		350~470	≥20		90~130	—
	Y		410~630	≥10		125~165	—
	T		≥585	≥2.5		≥155	—

Model number	Status	Tensile test			Hardness test		
		Thickness /mm	Tensile strength R. / (N/mm ²)	Elongation after fracture A ₁ 1.3/%	Thickness / mm	Vickers hardness HV	Rockwell hardness HRB
H59	R	4~14	≥290	≥25	—	—	—
	M	0.3~10	≥290	≥10	≥0.3	—	—
	Y		≥410	≥5		≥130	—
HPb59-1	R	4~14	≥370	≥18	—	—	—
	M	0.3~10	≥340	≥25	—	—	—
	Y ₂		390~490	≥12			
	Y		≥440	≥5			
HPb60-2	Y	—	—	—	0.5~2.5	165~190	
					2.6~10	—	75~92
	T	—	—	—	0.5~1.0	≥180	—
HMn58-2	M	0.3~10	≥380	≥30	—	—	—
	Y ₂		440~610	≥25			
	Y		≥585	≥3			
HSn62-1	R	4~14	≥340	≥20	—	—	—
	M	0.3~10	≥295	≥35			
	Y ₂		350~400	≥15			
	Y		≥390	≥5			
HMn57-3-1	R	4~8	≥440	≥10	—	—	—
HMn55-3-1	R	4~15	≥490	≥15	—	—	—
HA160-1-1	R	4~15	≥440	≥15	—	—	
HA167-2.5	R	4~15	≥390	≥15	—	—	—
HA166-6-3-2	R	4~8	≥685	≥3	—	—	—
HNi65-5	R	4~15	≥290	≥35	—	—	—
QA15	M	0.4~12	≥275	≥33	—	—	—
	Y		≥585	≥2.5			
QA17	Y ₂	0.4~12	585~740	≥10	—	—	—
	Y		≥635	≥5			
QA19-2	M	0.4~12	≥440	≥18	—	—	—
	Y		≥585	≥5			
QA19-4	Y	0.4~12	≥585	—	—	—	—
QSn6.5-0.1	R	9~14	≥290	≥38	≥0.2	—	—
	M	0.2~12	≥315	≥40		≤120	—
	Y ₄	0.2~12	390~510	≥35		110~155	—
	Y ₂	0.2~12	490~610	≥8		150~190	—



Model number	Status	Tensile test			Hardness test		
		Thickness / mm	Tensile strength R. / (N/mm²)	Elongation after fracture A ₁ 1.3/%	Thickness / mm	Vickers hardness HV	Rockwell hardness HRB
QSn6.5-0.1	Y	0.2~3	590~690	≥5	≥0.2	180~230	—
		>3~12	540~690	≥5		180~230	
	T	0.2~5	635~720	≥1		200~240	—
	TY		≥690	—		≥210	—
QSn6.5-0.4	M	0.2~12	≥295	≥40	—	—	—
QSn7-0.2	Y		540~690	≥8			
	T		≥665	≥2			
QSn4-3	M	0.2~12	≥290	≥40	—	—	—
QSn4-0.3	Y		540~690	≥3			
	T		≥635	≥2			
QSn8-0.3	M	0.2~5	≥345	≥40	≥0.2	≤120	—
	Y		390~510			100~160	—
	Y ₂		490~610			150~205	—
	Y		590~705			180~235	—
	T		≥685			≥210	—
QCd1	Y	0.5~10	≥390	—	—	—	—
QCr0.5	Y	—	—	—	0.5~15	≥110	
QCr0.5-0.2-0.1							
QMn1.5	M	0.5~5	≥205	≥30	—	—	—
QMn5	M	0.5~5	≥290	≥30	—	—	—
	Y		≥440	≥3			
QSi3-1	M	0.5~10	≥340	≥40	—	—	—
	Y		585~735	≥3			
	T		≥685	≥1			
QSn4-4-2.5	M	0.8~5	≥290	≥35	≥0.8	—	—
QSn4-4-4	Y ₃		390~490	≥10			65~85
	Y ₂		420~510	≥9			70~90
	Y		≥510	≥5			—
BZn15-20	M	0.5~10	≥340	≥35	—	—	—
	Y ₂		440~570	≥5			
	Y		540~690	≥1.5			
	T		≥640	≥1			
BZn18-17	M	0.5~5	≥375	≥20	≥0.5	—	—
	Y ₂		440~570	≥5		120~180	
	Y		≥540	≥3		≥150	

Model number	Status	Tensile test			Hardness test		
		Thickness / mm	Tensile strength R. / (N/mm²)	Elongation after fracture A ₁ 1.3/%	Thickness / mm	Vickers hardness HV	Rockwell hardness HRB
B5	R	7~14	≥215	≥20	—	—	—
	M Y	0.5~10	≥215	≥30	—	—	—
			≥370	≥10			
B19	R	7~14	≥295	≥20	—	—	—
	M Y	0.5~10	≥290	≥25	—	—	—
			≥390	≥3			
BFe10-1-1	R	7~14	≥275	≥20	—	—	—
	M Y	0.5~10	≥275	≥28	—	—	—
			≥370	≥3			
BFe30-1-1	R	7~14	≥345	≥15	—	—	—
	M Y	0.5~10	≥370	≥20	—	—	—
			≥530	≥3			
BA1 6-1.5	Y	0.5~12	≥535	≥3	—	—	—
BA1 13-3	CYS		≥635	≥5	—	—	—
BMn40-1.5	M Y	0.5~10	390~590 ≥590	actual measurement actual measurement	—	—	—
BMn3-12	M	0.5~10	≥350	≥25	—	—	—
Note: For plates with thickness outside the specified range, the properties shall be agreed upon between the supplier and the buyer.							

Development Vision »

Looking to the future, Cymber will continue to deeply cultivate the field of metal materials, continuously expanding its product lines and enhancing its processing capabilities and service levels. The company aspires to become a trusted, core-competitive benchmark enterprise in comprehensive metal material services, joining hands with partners to advance together and create brilliance.